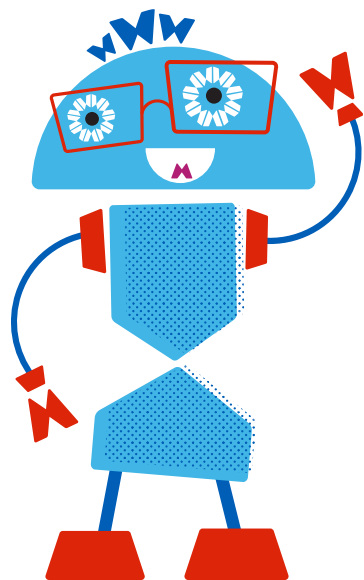


Common Medicines

Clair Noctor

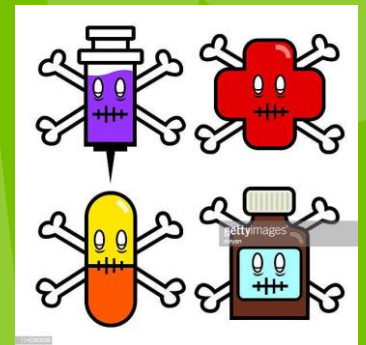
Paediatric Cardiology Specialist Practitioner

Royal Manchester Children's Hospital



Categories of Medicines

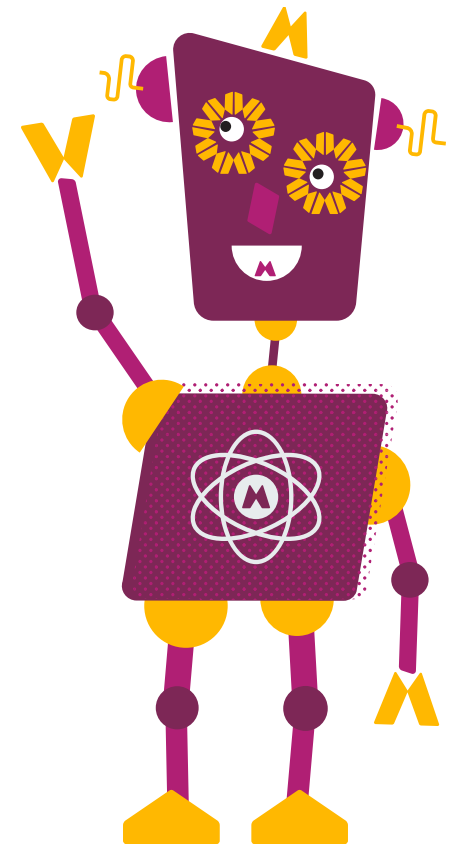
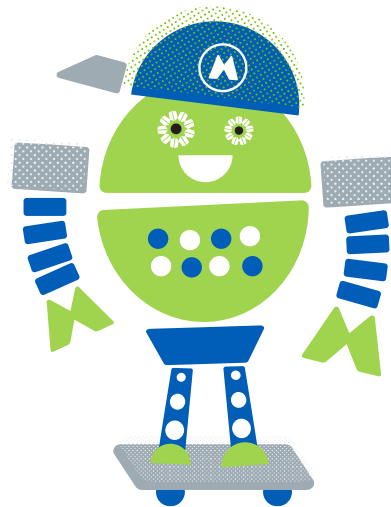
- Anti Failure Medicines
- Anti Arrhythmic Medicines
- Medicines to support the Heart's Function



Heart Failure

Inability of the Heart to satisfy the metabolic demands of the body

- Always due to something else
- **Can be controlled**
- Need to address the underlying problem
 - ~ Structural
 - ~ Electrical
 - ~ Mechanical



Anti Failure Medicines

Diuretics

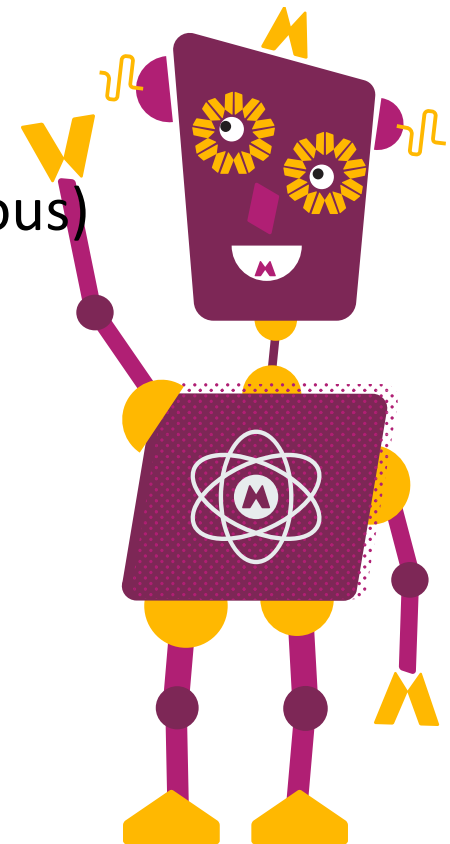
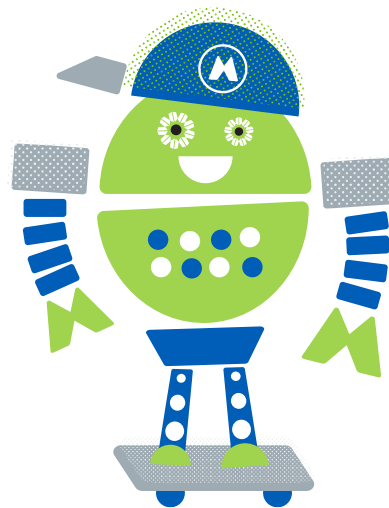
- Furosemide, Spironalactone (Amiloride, Chlorothiazide)

ACE Inhibitors

- Captopril, Enalapril, Lisinopril

Phosphodiesterase Type-3 inhibitor (Intravenous)

- Milrinone



Anti Arrhythmic Medicines

Beta blockers

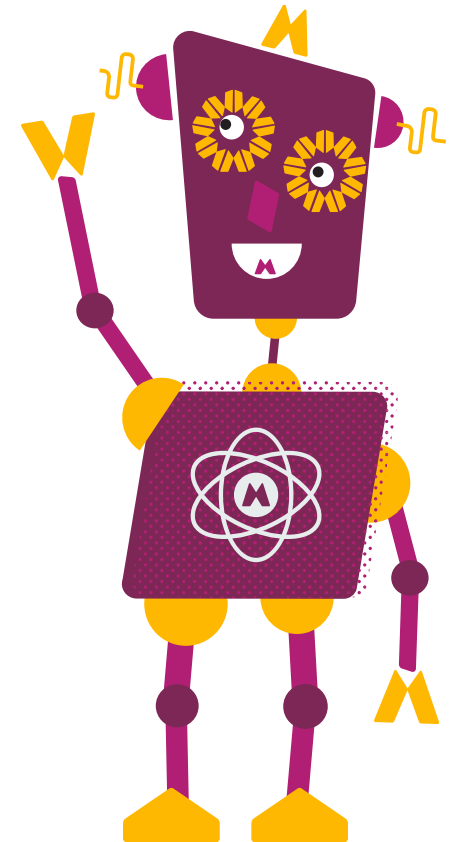
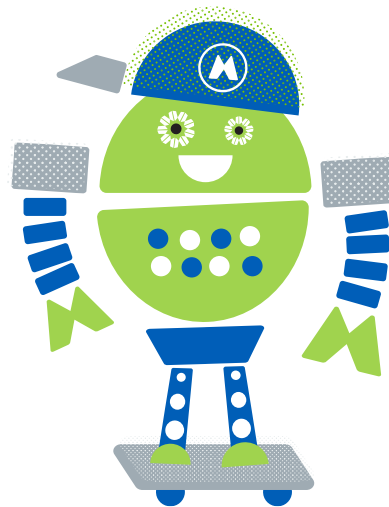
- Propranolol, Atenolol, Nadolol
- SVT, LQT*

Flecainide

- *SVT, CPVT*

Amiodarone

- *VT, VF Wide Complex Tachycardia, SVT*



Heart Function Medicines

Dilated Cardiomyopathy

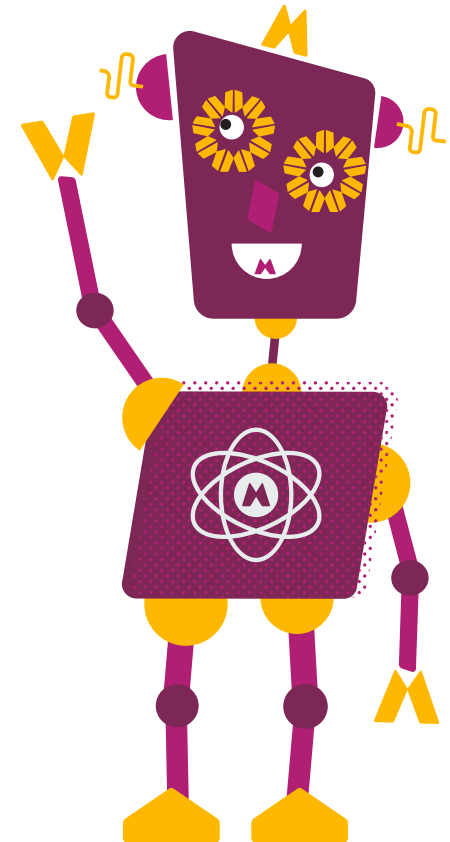
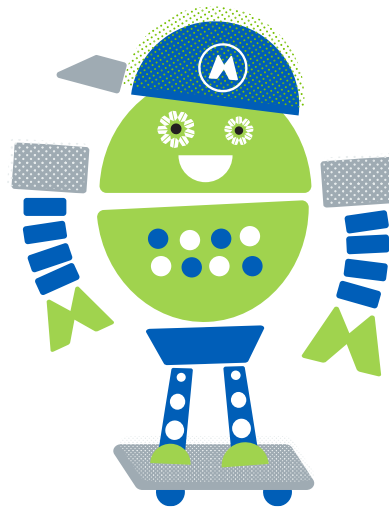
- Diuretics
- ACE Inhibitors
- Beta Blocker (*Carvedilol*)
- Aspirin
- Digoxin

Hypertrophic Cardiomyopathy

- Beta Blockers (*Propranolol, Atenolol*)

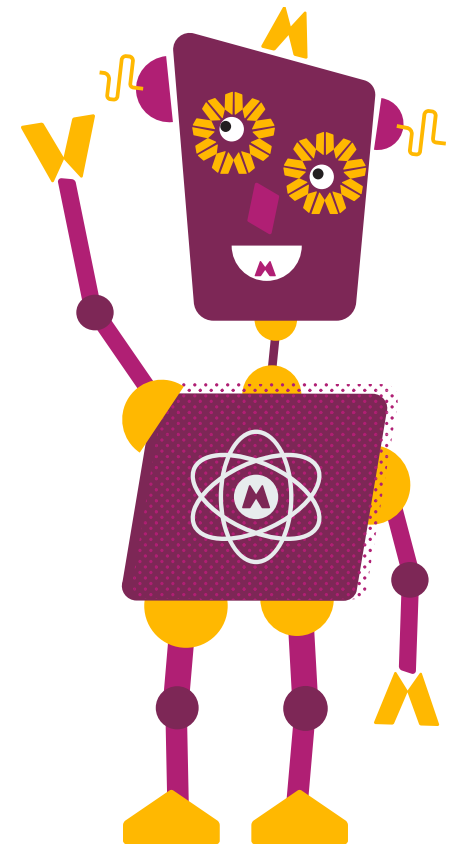
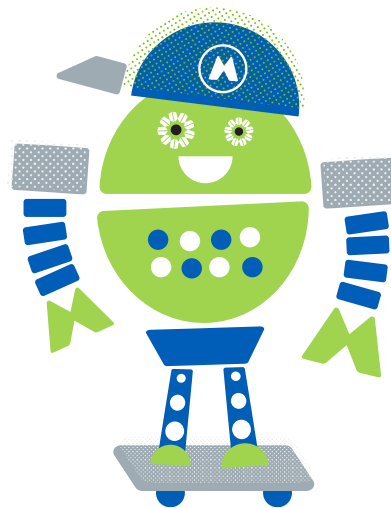
Myocarditis

- Corticosteroids
- Antibiotics
- Diuretics
- Beta blockers
- ACE Inhibitors



Monitoring

- Blood Pressure
- Heart Rate
- ECG
- *Echo*
- Blood Tests
- Appearance





Thank You!

Any Questions?

Contact Details

Tel 0161 701 0664/5

Email mft.rmch.cardiospecnurses@nhs.net

