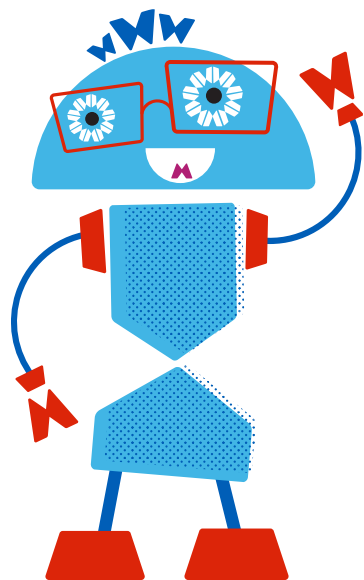


Red Flags

Clair Noctor
Cardiac Specialist Practitioner
Royal Manchester Children's Hospital

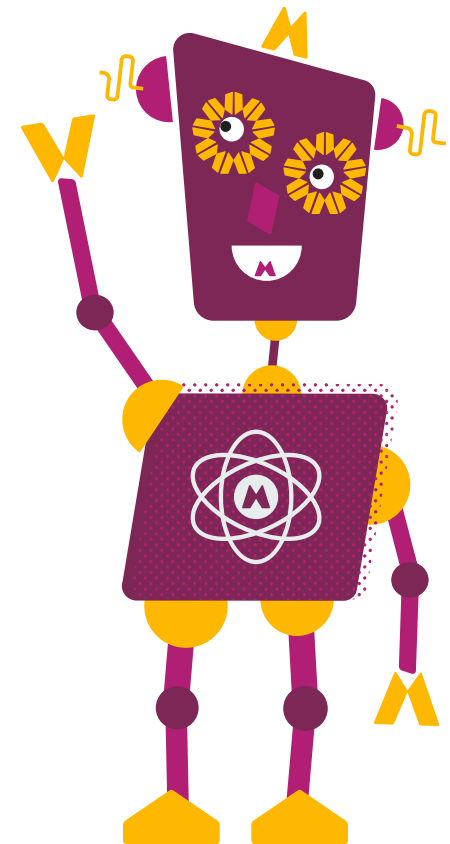
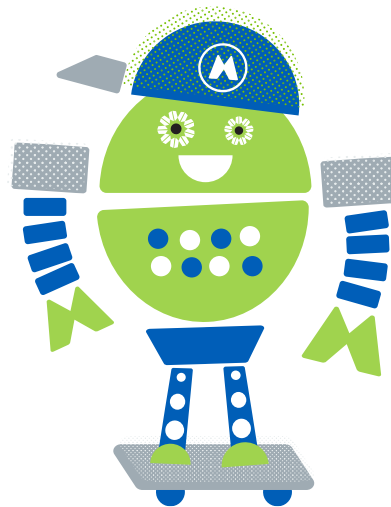


Cardiac Output

Amount of Blood Ejected From One Ventricle per Minute

Dependent on Four Factors

- - Pre-load (Stretching)
- - Contractility (Efficiency)
- - Afterload (Resistance)
- - Heart Rate/Rhythm



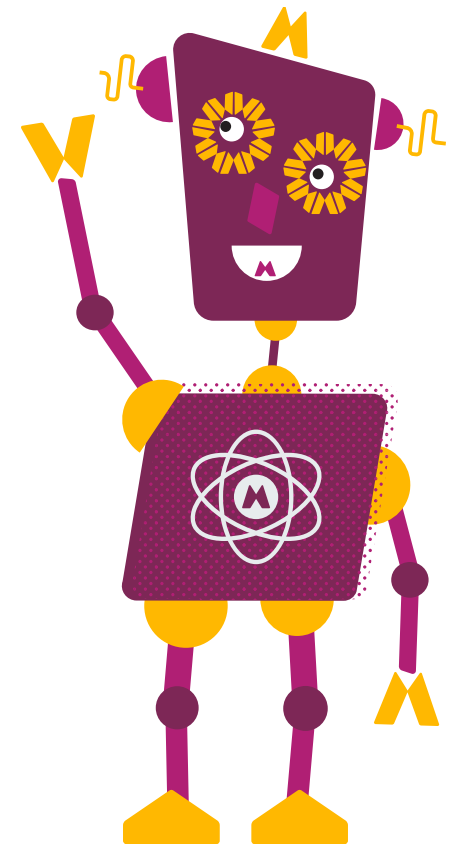
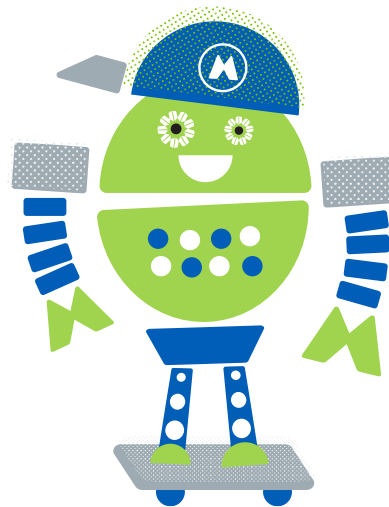
Cardiac Output

Dependent on Age and Weight

- Infant = 200ml/kg/min
- Child = 150ml/kg/min
- Adolescent = 100ml/kg/min

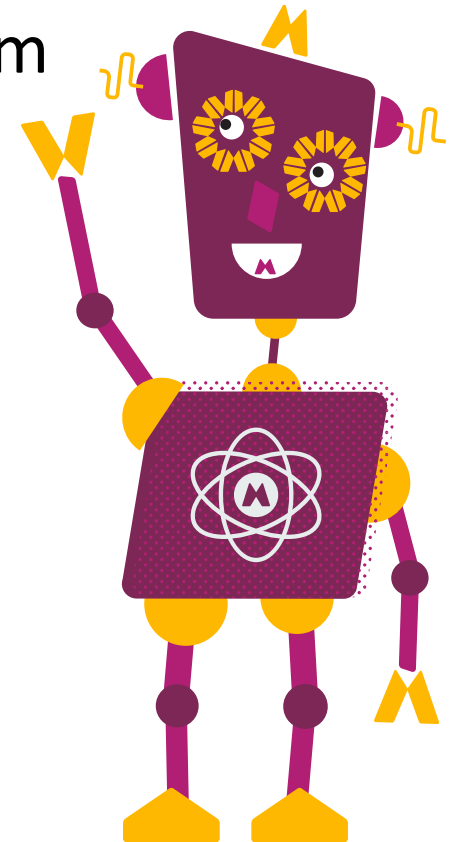
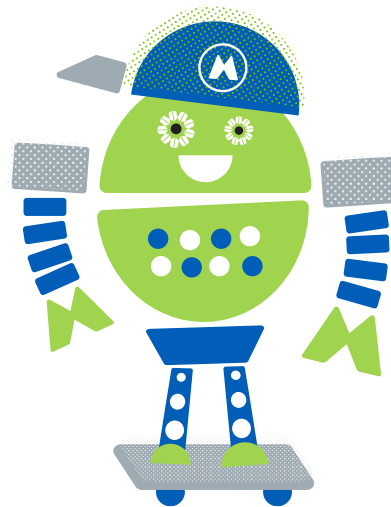
A new born baby weighing 3 kg = 3×200
= 600ml/minute

Usual Circulating volume ~ 350ml.....



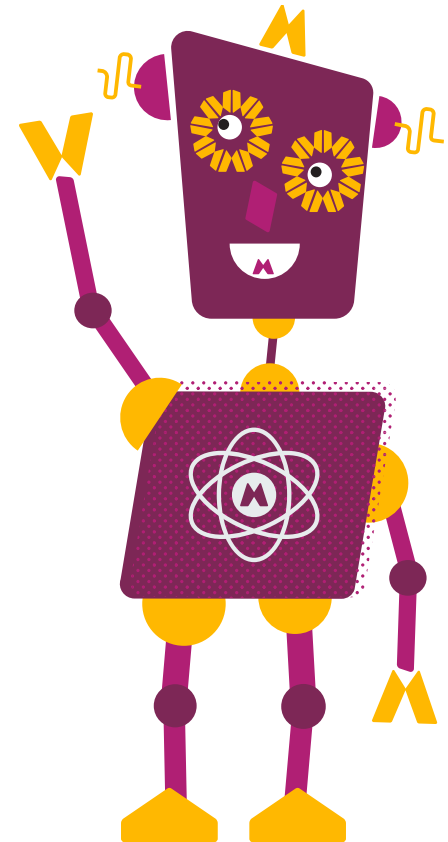
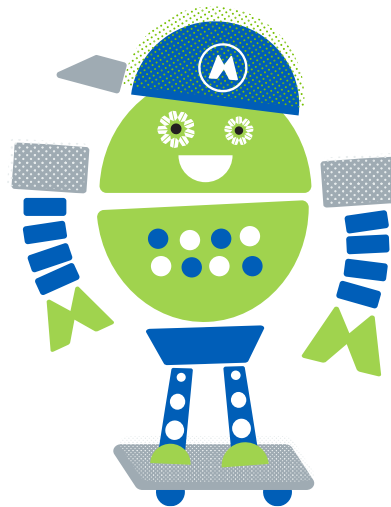
Heart Failure

- Inability of the Heart to satisfy the metabolic demands of the body
- Always due to something else
- Can be controlled
- Need to address the underlying problem
 - ~ Structural
 - ~ Electrical
 - ~ Mechanical



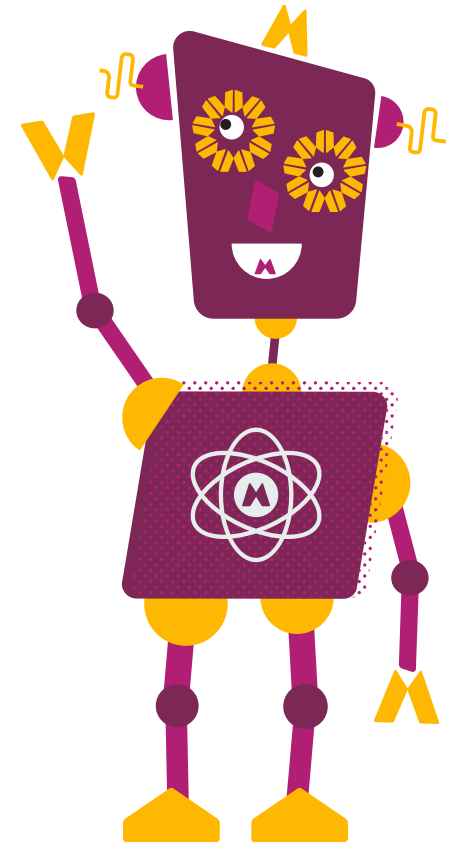
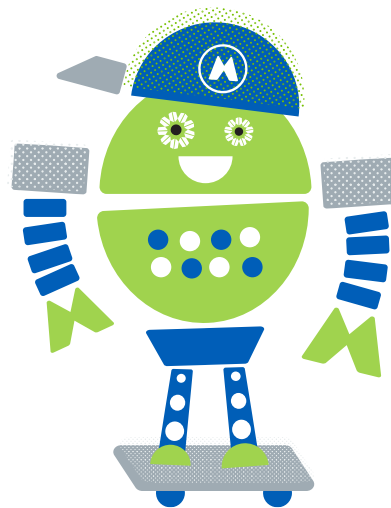
“Looks bad,
it is bad”

Mary Jane Hazinski, 1994



Signs and Symptoms of Heart Failure

- Poor feeding
- Sleepy
- Poor growth
- Tachypnoea
- Tachycardia
- Weak, thready pulse
- Cyanosis
- Cough
- Increased weight
- Decreased Urine Output
- Cold, clammy (mottled) skin
- Oedema
- Increased Liver size
- Vomiting
- Anxious, restless
- Lethargy
- Hypotension



If some of these are
present.....

CALL FOR HELP!

